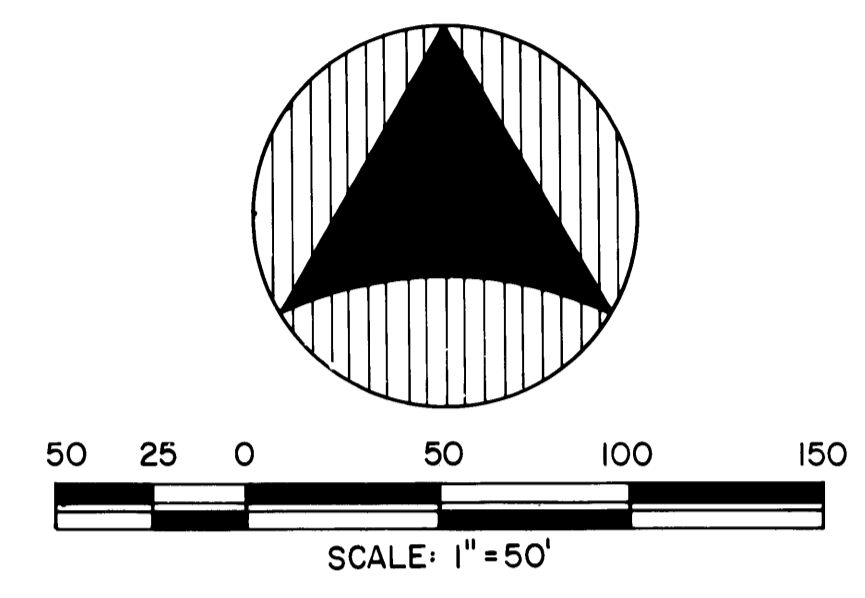


EAGLEWOOD, P.U.D.

BEING A PART OF SECTIONS 27 AND 28, TOWNSHIP 39 SOUTH, RANGE 42 EAST, MARTIN COUNTY, FLORIDA

PREPARED BY:
HOLLY & WEBER, INC.
 ENGINEERS - PLANNERS - SURVEYORS
 601 S. FEDERAL HIGHWAY - STUART, FLORIDA
 (305) 286-7770

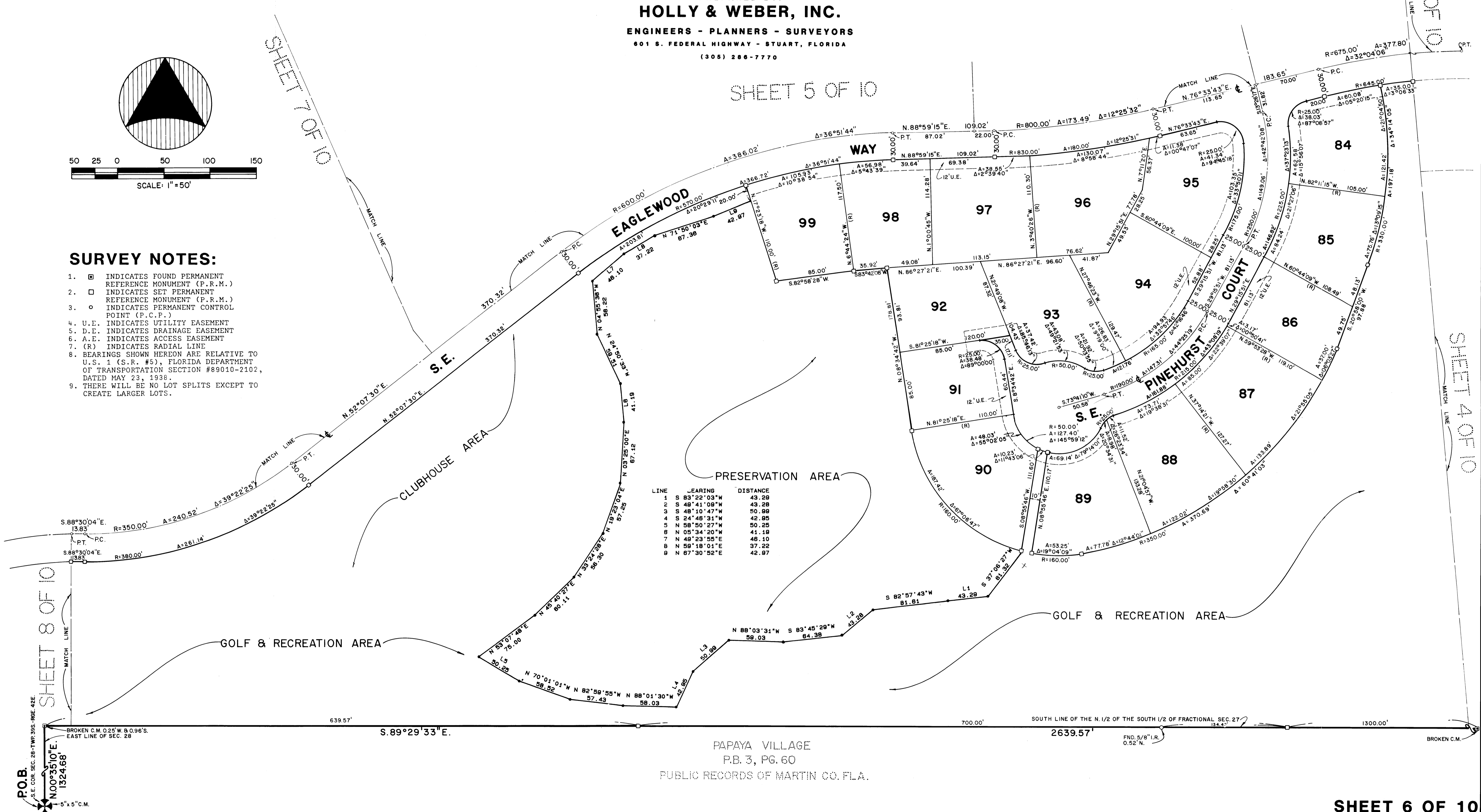
PLR 9
 PC 26



SURVEY NOTES:

1. INDICATES FOUND PERMANENT REFERENCE MONUMENT (P.R.M.)
2. INDICATES SET PERMANENT REFERENCE MONUMENT (P.R.M.)
3. INDICATES PERMANENT CONTROL POINT (P.C.P.)
4. U.E. INDICATES UTILITY EASEMENT
5. D.E. INDICATES DRAINAGE EASEMENT
6. A.E. INDICATES ACCESS EASEMENT
7. (R) INDICATES RADIAL LINE
8. BEARINGS SHOWN HEREON ARE RELATIVE TO U.S. 1 (S.R. #5), FLORIDA DEPARTMENT OF TRANSPORTATION SECTION #89010-2102, DATED MAY 23, 1938.
9. THERE WILL BE NO LOT SPLITS EXCEPT TO CREATE LARGER LOTS.

SHEET 5 OF 10



LINE	BEARING	DISTANCE
1	S 83°22'03"W	43.28
2	S 48°41'09"W	43.28
3	S 48°10'47"W	50.99
4	S 24°46'31"W	42.95
5	S 58°50'27"W	50.25
6	N 05°34'20"W	41.19
7	N 49°23'55"E	46.10
8	N 58°18'01"E	37.22
9	N 67°30'52"E	42.97